

900-950nm 3-port Optical Circulator

FEATURES

- High Isolation
- Low Insertion Loss
- Epoxy-Free Optical Path
- High Reliability and Stability
- Low Profile Packaging

APPLICATIONS

- Fiber Optic Amplifiers
- Fiber Optic Instruments
- WDM Systems
- Dispersion Compensation
- Light Routing

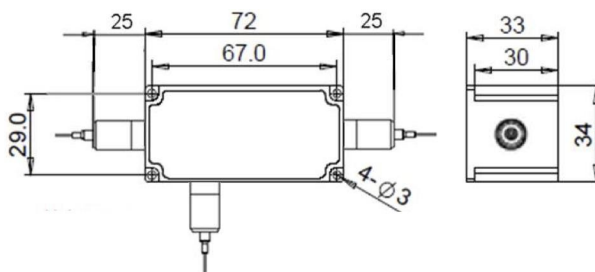


SPECIFICATIONS

Parameter	Unit	Value	
Working Wavelength	nm	915±10, 930±10, 940±10, 950±10	
Insertion Loss@23°C	(Typ.)	dB	1.0
	(Max.)	dB	1.8
Isolation@23°C	(Typ.)	dB	23
	(Min.)	dB	18
PDL	dB	≤0.2	
Optical Return Loss	dB	≥45	
Cross Talk	dB	≥45	
Fiber Type	-	HI780 Fiber, HI1060 Fiber or 10/125um SC Fiber (E) 10/125um DC Fiber (O), 15/130um DC Fiber (W) 20/130um DC Fiber (Q) or 25/250um DC Fiber (R)	
Fiber Tensile Load	N	5	
Maximum Optical Power (CW)	W	0.3, 0.5, 1, 2, 3, 5, 10, 15, 20, 25, 30, 50, 60, 80, 100	
Operating Temperature	°C	0~50	
Storage Temperature	°C	-10~65	

- Note:**
1. Specifications are for device without connectors; Specifications may change without notice.
 2. To add connectors, IL is 0.7dB higher, RL is 5dB lower.
 3. Only guarantee 1W continuous wave (CW) power thru testing for connectors added.
 4. Devices for higher optical power or with other type fiber or consigned fiber are also available; Devices can only work in the core of Double Cladding (DC) Fiber, Cladding Power must be stripped before connecting the device
 5. Package size may be different for different optical power and fiber types.

DIMENSION DRAWING



ORDERING INFORMATION (PN)

FCIR-	NNN	-3HP NN	- (NN)	- (C)	C	NN	-CC/CCC
Center Wavelength	Optical Power	Optical Power P2	Fiber Type	Fiber Sleeve	Fiber Length	Connector Type	
915-915nm	05-500mW	1-1W	H-HI1060 Fiber	B- Bare fiber	05-0.5m	N-Without Connector	
930-930nm	1-1W	2-2W	E-10/125 SC Fiber	L- Loose Tube	10-1.0m	FC/APC=FC/APC Connector	
940-940nm	5-5W	5-5W	R-25/250 DC Fiber	2- 2mm Cable	15-1.5m	LC/PC=LC/PC Connector	
950-950nm	20-20W	Blank for P2-P1	Blank for HI780 Fiber	3- 3mm Cable	20-2.0m	SC/UPC=SC/UPC Connector	

