

830-850nm PM Isolator for Pulse Power

FEATURES

- High Isolation
- Low Insertion Loss
- Epoxy-Free Optical Path
- High Reliability and Stability
- Low Profile Packaging

APPLICATIONS

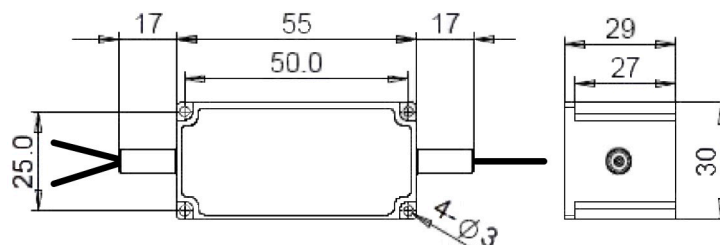
- Fiber Optic Amplifiers
- Fiber Optic Instruments
- WDM Systems
- Transmitters and Fiber Lasers
- CATV Networks

SPECIFICATIONS

Parameter	Unit	Value	
Center Wavelength (λ_c)	nm	830, 850	
Working Wavelength	nm	+/-10	
Peak Isolation (Typ.)	dB	28	
Isolation (23°C)	dB	≥23	
Insertion Loss (Typ, λ_c , 23°C)	dB	1.0	
Insertion Loss (Max, 23°C)	dB	1.8	
Optical Return Loss (Input/Output)	dB	50/50	
Extinction Ratio (for FHIS)	dB	≥18	
Fiber Type of Port 3	S Type	-	Corresponding SM Fiber
	P Type	-	Same Fiber to Port1&2, Slow axis align to Port 1
	Q Type	-	Same Fiber to Port1&2, Slow axis is 45° to Port 1
Fiber Type of Port 1 & Port 2	-	-	PM850 Fiber or PM780-HP Fiber
Fiber Tensile Load	N	-	5
Maximum Average Power	W	-	0.3, 0.5, 1, 2, 3, 5, 10, 15, 20
Max. Peak Power for Pulse	kW	-	0.1, 1, 2, 3, 5, 10, 15, 20
Operating Temperature	°C	-	0~50
Storage Temperature	°C	-	-20~75

- Note:**
1. Specifications are for device without connectors; Specifications may change without notice.
 2. To add connectors, IL is 0.7dB higher, RL is 5dB lower, ER is 2dB Lower, Connector key is aligned to slow axis.
 3. Only guarantee 1W continuous wave (CW) power thru testing for connectors added.
 4. Devices for higher optical power or with other type fiber or consigned fiber are also available.

PACKAGE DIMENSION



ORDERING INFORMATION (PN) FHIC=PBC/Isolator Hybrid; FHIS=PBS/Isolator Hybrid.

FHIC FHIS	NNN	C	H	NN	P	NN	C	C	NN	-CC/CCC
	Center Wavelength	3rd Port Fiber		Average Power	Peak Power	Fiber Type	Fiber Sleeve	Fiber Length	Connector Type	
	830-830nm	S=S Type		03=300mW	01=100W	2= PM850 Fiber	B=Bare Fiber	05=0.5m		N=Without Connector
	850-850nm	P=P Type		1= 1W	1= 1kW	7=PM780HP Fiber	L=Loose Tube	10=1.0m		FC/APC=FC/APC Connector
		Q=Q Type		5= 5W	5= 5kW		2= 2mm Cable	15=1.5m		LC/PC=LC/PC Connector
				10=10W	10=10kW		3=3mm Cable	20=2.0m		SC/UPC=SC/UPC Connector