

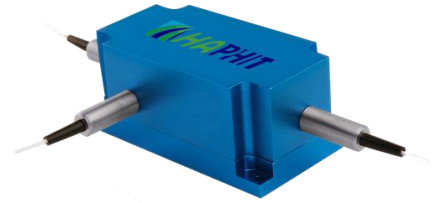
## 1092nm High Power 3-port PM Optical Circulator

### FEATURES

- High Isolation
- Low Insertion Loss
- Epoxy-Free Optical Path
- High Reliability and Stability
- Low Profile Packaging

### APPLICATIONS

- Fiber Optic Amplifiers
- Fiber Optic Instruments
- WDM Systems
- Dispersion Compensation
- Light Routing

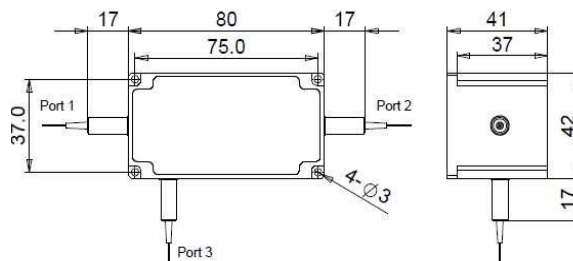


### SPECIFICATIONS

Parameter	Unit	Value	
Center Wavelength	nm	1092	
Operating Wavelength Range	nm	+/-10	
Insertion Loss@ 23 °C (1→2 or 2→3)	(Typ.)	dB	0.8
	(Max.)	dB	1.6
Isolation @ 23 °C (3→2 or 2→1)	(Typ.)	dB	23
	(Min.)	dB	20
Work Mode	S Type	-	Can only work in slow axis
	F Type	-	Can work both in slow axis and fast axis
Optical Return Loss	dB	≥45	
Extinction Ratio	dB	18	
Fiber Type	-	PM980 Fiber, PM1060L Fiber (E) or PM1060L-FA Fiber (L) 10/125um PMDC Fiber (O), 15/130um PMDC Fiber (W) 20/130um PMDC Fiber (Q) or 25/250um PMDC Fiber (R)	
Fiber Tensile Load	N	5	
Maximum Optical Power (CW)	W	0.5, 1, 2, 3, 5, 10, 15, 20, 25, 30	
Operating Temperature	°C	0~50	
Storage Temperature	°C	-10~65	

- Note:**
- Specifications are for device without connectors; Specifications may change without notice.
  - To add connectors, IL is 0.5dB higher, RL is 5dB lower, ER is 2dB Lower, Connector key is aligned to slow axis.
  - Only guarantee 1W continuous wave (CW) power thru testing for connectors added.
  - Devices for higher optical power or with other type fiber or consigned fiber are also available; Devices can only work in the core of Double Cladding (DC) Fiber, Cladding Power must be stripped before connecting the device
  - Package size may be different for different optical power and fiber types.

### PACKAGE DIMENSION



### ORDERING INFORMATION (PN)

FPCR-	<b>NNNN</b>	- (C) 3HP	<b>NN</b>	- (NN)	- C	C	NN	-CC/CCC
	Center Wavelength	Work Mode	Optical Power	Optical Power P2	Fiber Type	Fiber Sleeve	Fiber Length	Connector Type
	1092-1092nm	F-F Type	05- 500mW	1- 1W	2-PM980Fiber	B- Bare Fiber	05-0.5m	N-Without Connector
		Blank for S Type	1- 1 Watts	2- 2W	E-PM1060L Fiber	L- Loose Tube	10-1.0m	FC/APC=FC/APC Connector
			5- 5 Watts	5-5W	Q-20/130 PMDC Fiber	2- 2mm Cable	15-1.5m	LC/PC=LC/PC Connector
			20- 20 Watts	Blank for P2=P1	R-25/250 PMDC Fiber	3- 3mm Cable	20-2.0m	SC/UPC=SC/UPC Connector