

1120nm High Power 4-port PM Circulator for Pulse Power

FEATURES

- High Isolation
- Low Insertion Loss
- Epoxy-Free Optical Path
- High Reliability and Stability
- Low Profile Packaging

APPLICATIONS

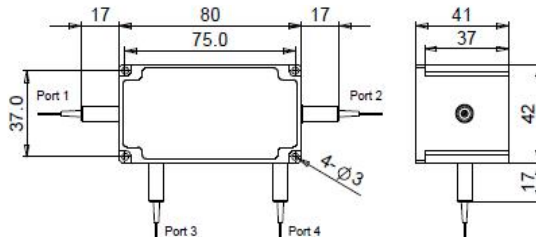
- Fiber Optic Amplifiers
- Fiber Optic Instruments
- WDM Systems
- Dispersion Compensation
- Light Routing

SPECIFICATIONS

Parameter	Unit	Value	
Center Wavelength	nm	1120	
Operating Wavelength Range	nm	+/-10	
Insertion Loss@ 23 °C	(Typ.)	dB	1.0
	(Max.)	dB	1.8
Optical Path	C Type	-	1→2, 2→3, 3→4 (Loss:4→1 is Uncontrolled)
	D Type	-	1→2, 2→3, 3→4, 4→1
Isolation @ 23 °C (4→3, 3→2, 2→1)	(Typ.)	dB	20
	(Min.)	dB	16
Optical Return Loss	dB	≥45	
Extinction Ratio	dB	18	
Work Mode	S Type	-	Can only work in slow axis
	F Type	-	Can work both in Slow and Fast Axis
Fiber Type	-	-	PM980 Fiber, PM1060L Fiber (E) or PM1060L-FA Fiber (L)
	-	-	10/125um PMDC Fiber (O), 15/130um PMDC Fiber (W)
	-	-	20/130um PMDC Fiber (Q) or 25/250um PMDC Fiber (R)
Fiber Tensile Load	N	5	
Max. Average Optical Power	W	0.5, 1, 2, 3, 5, 10, 15, 20, 25, 30	
Max. Peak Power for Pulse	kW	0.1, 1, 2, 3, 5, 10, 15, 20	
Operating Temperature	°C	0~50	
Storage Temperature	°C	-10~65	

- Note:**
- Specifications are for device without connectors; Specifications may change without notice.
 - To add connectors, IL is 0.5dB higher, RL is 5dB lower, ER is 2dB Lower, Connector key is aligned to slow axis.
 - Only guarantee 1W continuous wave (CW) power thru testing for connectors added.
 - Devices for higher optical power or with other type fiber or consigned fiber are also available; Devices can only work in the core of Double Cladding (DC) Fiber, Cladding Power must be stripped before connecting the device.
 - Package size maybe different for different fiber type, optical power, etc.

PACKAGE DIMENSION



ORDERING INFORMATION (PN)

FPCR-NNNN	- (C)	(C)	-4H NN	P NN	- C	C	NN	-CC/CCC
Center Wavelength	Work Mode	Optical Path	Average Power	Peak Power	Fiber Type	Fiber Sleeve	Fiber Length	Connector Type
1120~1120nm	F=F Type Blank for S Type	D=D Type Blank for C Type	05= 500mW 1= 1 Watts 10= 10 Watts 25= 25 Watts	01=100W 1= 1kW 5=5kW 10=10kW	2=PM980Fiber E=PM1060L Fiber Q=20/130 PMDC Fiber R=25/250 PMDC Fiber	B= Bare Fiber L= Loose Tube 2= 2mm Cable 3= 3mm Cable	05=0.5m 10=1.0m 15=1.5m 20=2.0m	N=Without Connector FC/APC=FC/APC Connector LC/PC=LC/PC Connector SC/UPC=SC/UPC Connector