

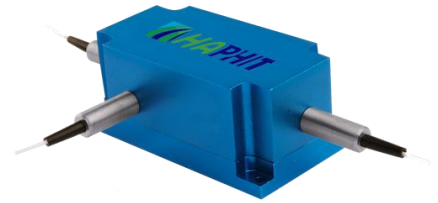
## 1120nm High Power 3-port PM Optical Circulator

### FEATURES

- High Isolation
- Low Insertion Loss
- Epoxy-Free Optical Path
- High Reliability and Stability
- Low Profile Packaging

### APPLICATIONS

- Fiber Optic Amplifiers
- Fiber Optic Instruments
- WDM Systems
- Dispersion Compensation
- Light Routing

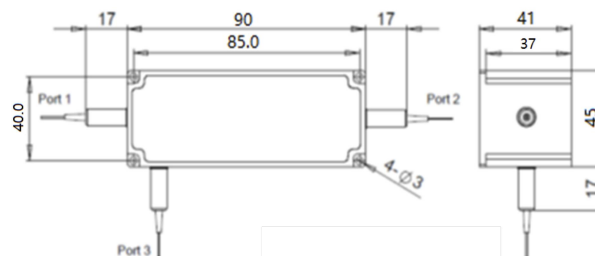


### SPECIFICATIONS

Parameter	Unit	Value	
Center Wavelength	nm	1120	
Operating Wavelength Range	nm	+/-10	
Insertion Loss@ 23 °C (1→2 or 2→3)	(Typ.)	dB	0.8
	(Max.)	dB	1.8
Isolation @ 23 °C (3→2 or 2→1)	(Typ.)	dB	20
	(Min.)	dB	16
Work Mode	S Type	-	Can only work in slow axis
	F Type	-	Can work both in slow axis and fast axis
Optical Return Loss	dB	≥45	
Extinction Ratio	dB	18	
Fiber Type	-	PM980 Fiber, PM1060L Fiber (E) or PM1060L-FA Fiber (L) 10/125um PMDC Fiber (O), 15/130um PMDC Fiber (W) 20/130um PMDC Fiber (Q) or 25/250um PMDC Fiber (R)	
Fiber Tensile Load	N	5	
Maximum Optical Power (CW)	W	0.5, 1, 2, 3, 5, 10, 15, 20, 25, 30	
Operating Temperature	°C	0~50	
Storage Temperature	°C	-10~65	

- Note:**
- Specifications are for device without connectors; Specifications may change without notice.
  - To add connectors, IL is 0.5dB higher, RL is 5dB lower, ER is 2dB Lower, Connector key is aligned to slow axis.
  - Only guarantee 1W continuous wave (CW) power thru testing for connectors added.
  - Devices for higher optical power or with other type fiber or consigned fiber are also available; Devices can only work in the core of Double Cladding (DC) Fiber, Cladding Power must be stripped before connecting the device
  - Package size may be different for different optical power and fiber type.

### PACKAGE DIMENSION



### ORDERING INFORMATION (PN)

<b>FPCR-</b>	<b>NNNN</b>	<b>- (C) 3HP NN</b>	<b>- (NN)</b>	<b>- C</b>	<b>C</b>	<b>NN</b>	<b>-CC/CCC</b>
<i>Center Wavelength</i>	<i>Work Mode</i>	<i>Optical Power</i>	<i>Optical Power P2</i>	<i>Fiber Type</i>	<i>Fiber Sleeve</i>	<i>Fiber Length</i>	<i>Connector Type</i>
1120~1120nm	F=F Type <i>Blank for S Type</i>	05= 500mW 1= 1 Watts 5= 5 Watts 20= 20 Watts	1= 1W 2= 2W 5=5W <i>Blank for P2=P1</i>	2=PM980Fiber E=PM1060L Fiber Q=20/130 PMDC Fiber R=25/250 PMDC Fiber	B= Bare Fiber L= Loose Tube 2= 2mm Cable 3= 3mm Cable	05=0.5m 10=1.0m 15=1.5m 20=2.0m	N=Without Connector FC/APC=FC/APC Connector LC/PC=LC/PC Connector SC/UFC=SC/UFC Connector