

## 2000nm 3-port Optical Circulator for Pulse Power

### FEATURES

- ▣ High Isolation
- ▣ Low Insertion Loss
- ▣ Epoxy-Free Optical Path
- ▣ High Reliability and Stability
- ▣ Low Profile Packaging

### APPLICATIONS

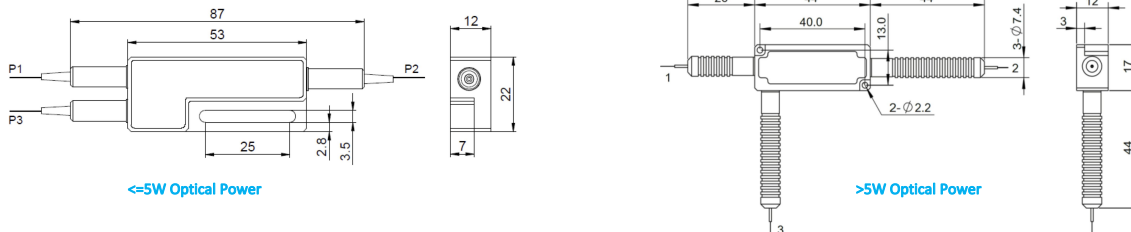
- ▣ Fiber Optic Amplifiers
- ▣ Fiber Optic Instruments
- ▣ WDM Systems
- ▣ Dispersion Compensation
- ▣ Light Routing

### SPECIFICATIONS

| Parameter                        | Unit                       | A Type   | B Type                     | C Type                           |
|----------------------------------|----------------------------|--|----------------------------|----------------------------------|
| Working Wavelength ( $\lambda$ ) | nm                         | 2000 $\pm$ 20  |                            |                                  |
| Insertion Loss@23°C              | Typ.                       | 1.6  |                            | 1.3                              |
|                                  | Max.                       | 2.4  |                            | 1.8                              |
| Isolation@23°C                   | (Typ.)                     | 35   |                            | 20                               |
|                                  | (Min.)                     | 30   |                            | 16                               |
| Extinction Ratio                 | dB                         | $\geq$ 18  |                            |                                  |
| Optical Return Loss              | dB                         | $\geq$ 45  |                            |                                  |
| Cross Talk                       | dB                         | $\geq$ 40  |                            |                                  |
| Work Mode                        | S Type                     | -  | Can only work in slow axis |                                  |
|                                  | F Type                     | -  | -                          | Both Axis working                |
| Fiber Type                       | -                          | PM1550 Panda Fiber or PM1950 Fiber (V)<br>10/130um PMDC Fiber (O) or 25/250um PMDC Fiber (R) |                            |                                  |
| Fiber Tensile Load               | N                          | 5  |                            |                                  |
| Max. Average Optical Power       | W                          | 0.3, 0.5, 1, 2   |                            | 0.3, 0.5, 1, 2, 3, 5, 10, 15, 20 |
| Max. Peak Power for Pulse        | kW                         | 0.1, 1, 2, 3, 5, 10, 15, 20  |                            |                                  |
| Operating Temperature            | °C                         | 0~50   |                            |                                  |
| Storage Temperature              | °C                         | -20~75   |                            |                                  |
| Package                          | Stainless Steel Tube (SST) | mm   | $\phi$ 5.5xL35             |                                  |
| Dimension                        | Metal Box                  | mm   | L120xW12xH10               |                                  |

- Note:**
1. Specifications are for device without connectors; Specifications may change without notice.
  2. To add connectors, IL is 0.3dB higher, RL is 5dB lower, ER is 2dB Lower, Connector key is aligned to slow axis.
  3. Only guarantee 1W continuous wave (CW) power thru testing for connectors added.
  4. Devices for higher optical power or with other type fiber or consigned fiber are also available; Devices can only work in the core of Double Cladding (DC) Fiber, Cladding Power must be stripped before connecting the device.
  - 5 Package size may be different for different optical power and fiber types

### PACKAGE DIMENSION (C TYPE)



### ORDERING INFORMATION (PN)

| Center Wavelength | Work Mode        | Type                 | Average Power | Peak Power | Average Power P2 | Package       | Fiber Type          | Fiber Sleeve  | Fiber Length | Connector Type          |
|-------------------|------------------|----------------------|---------------|------------|------------------|---------------|---------------------|---------------|--------------|-------------------------|
| 2000-2000nm       | F=F Type         | A=A Type             | 03-300mW      | 01-100W    | 1-1W             | M-Metal Box   | 2-PM1550 Fiber      | B- Bare Fiber | 05-0.5m      | N-Without Connector     |
|                   | Blank for S Type | C=C Type             | 1-1W          | 1-1kW      | 2-2W             | Blank for SST | V- PM1950 Fiber     | L- Loose Tube | 10-1.0m      | FC/APC=FC/APC Connector |
|                   |                  | Blank for B Type     | 5-5W          | 5-5kW      | 5-5W             | or C Type     | O-10/130 PMDC Fiber | 2-2mm Cable   | 15-1.5m      | LC/PC=LC/PC Connector   |
|                   |                  | or C Type(>2W Power) | 10-10W        | 10-10kW    | Blank for P2-P1  |               | R-25/250 PMDC Fiber | 3-3mm Cable   | 20-2.0m      | SC/UPC=SC/UPC Connector |