

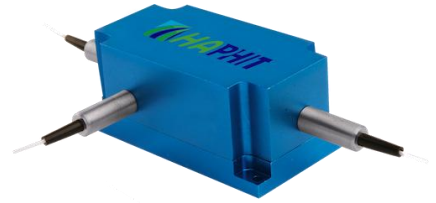
750~810nm 3-port PM Optical Circulator

FEATURES

- ▣ High Isolation
- ▣ Low Insertion Loss
- ▣ Epoxy-Free Optical Path
- ▣ High Reliability and Stability
- ▣ Low Profile Packaging

APPLICATIONS

- ▣ Fiber Optic Amplifiers
- ▣ Fiber Optic Instruments
- ▣ WDM Systems
- ▣ Dispersion Compensation
- ▣ Light Routing

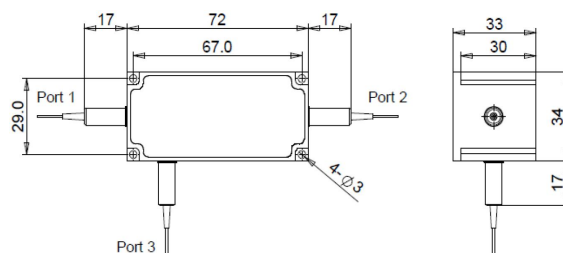


SPECIFICATIONS

Parameter	Unit	Value	
Working Wavelength	nm	750±10, 780±10, 793±10, 808±10	
Insertion Loss@23°C	(Typ.)	1.0	
	(Max.)	1.8	
Isolation@23°C	(Typ.)	19	
	(Min.)	16	
Extinction Ratio	dB	≥16	
Optical Return Loss	dB	≥45	
Cross Talk	dB	≥40	
Work Mode	S Type	-	Can only work in slow axis
	F Type	-	Can work both in Slow and Fast Axis
Fiber Type	-	PM850 Fiber or PM780-HP Fiber	
Fiber Tensile Load	N	5	
Maximum Optical Power (CW)	W	0.3, 0.5, 1, 2, 3, 5, 10, 15, 20	
Operating Temperature	°C	0~50	
Storage Temperature	°C	-10~65	

- Note:**
1. Specifications are for device without connectors; Specifications may change without notice.
 2. To add connectors, IL is 0.7dB higher, RL is 5dB lower, ER is 2dB Lower, Connector key is aligned to slow axis.
 3. Only guarantee 1W continuous wave (CW) power thru testing for connectors added.
 4. Devices for higher optical power or with other type fiber or consigned fiber are also available.
 5. Package size may be different for different optical power and fiber types

PACKAGE DIMENSION



ORDERING INFORMATION (PN)

FPCR-	NNN	- (C)	3HP NN	- (NN)	- N	C	NN	- CC/CCC
<i>Center Wavelength</i>	<i>Work Mode</i>		<i>Optical Power</i>	<i>Optical Power P2</i>	<i>Fiber Type</i>	<i>Fiber Sleeve</i>	<i>Fiber Length</i>	<i>Connector Type</i>
750-750nm	F=F Type		03- 300mW	1- 1W	2-PM850 Fiber	B- Bare fiber	05-0.5m	N-Without Connector
780-780nm	<i>Blank</i> for S Type		1- 1 Watts	2- 2W	7-PM780-HP Fiber	L- Loose Tube	10-1.0m	FC/APC=FC/APC Connector
790-790nm			3- 3 Watts	5-5W		2-2mm Cable	15-1.5m	LC/PC=LC/PC Connector
808-808nm			10- 10 Watts	<i>Blank</i> for P2-P1		3-3mm Cable	20-2.0m	SC/UPC=SC/UPC Connector